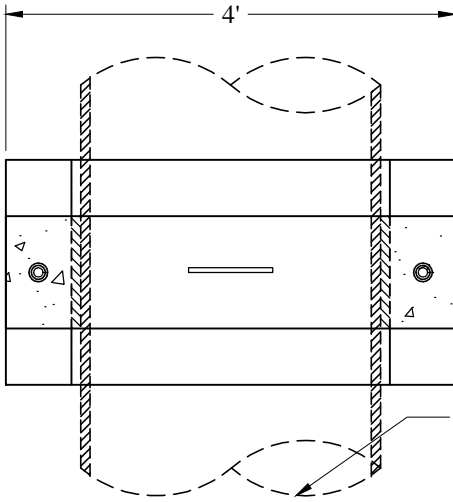


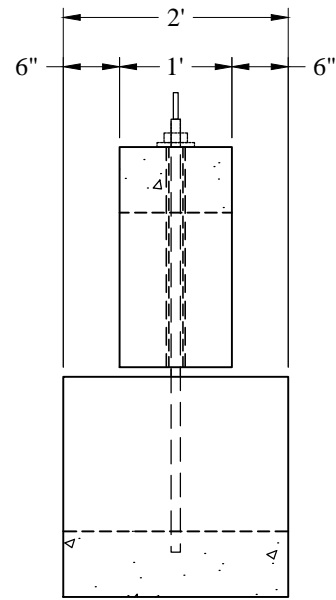
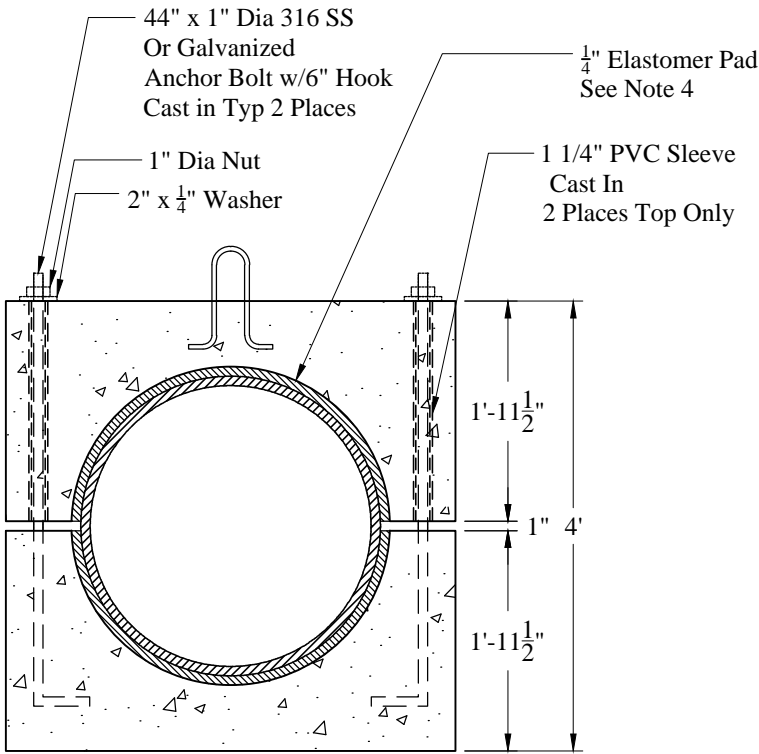
1-800-639-2199

Fax (603) 224-2927

Pipe Collars/Pipe Anchor Collar Type II (v)



Pipe Size Per Contract Specification



Phoenix Precast Products

Phoenix Precast Products

**General Notes**

1. Concrete:  $f_c = 5,000$  psi @ 28 Days Minimum. Type III Portland Cement, 5% to 8% Entrained Air. Water /Cement Ratio Not to Exceed 0.44
2. Steel Reinforcement Conforms to Latest ASTM Specification: ASTM A-615 Grade 60 Black Deformed Bars 3" Minimum Cover
3. Anchor Bolts, Nuts, & Washers are 316 Stainless Steel or Galvanized
4. Supplied with 2 Pieces Commercial Grade Neoprene Rubber (per Side) 1,000 psi Tensile Strength, Black, Shore A50 Durometer Hardness
5. Maximum Pipe OD for This Anchor is 32"
6. Weight Estimate is Based on Hole Sized for Maximum Pipe OD
7. To Be Assembled by Contractor

**Est Weight:**

Top: 825 Lbs  
 Bottom: 1,650 Lbs  
 Total: 2,475 Lbs

Phoenix  
 Precast  
 Products

Pipe Anchor Collar  
 Type II

P/N: PAC-TYPE2

Concord, NH 03301